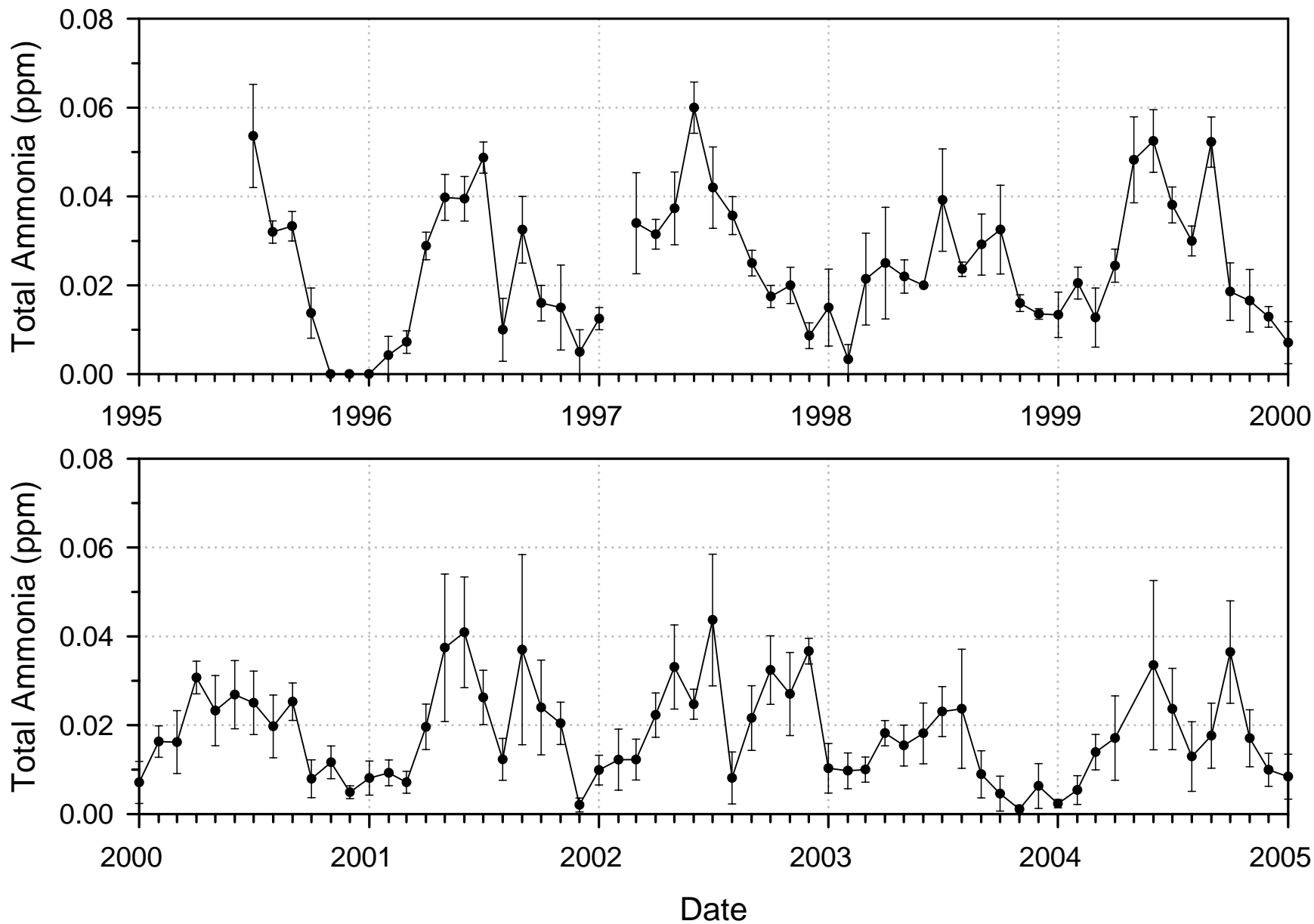


Multiple plots of the total ammonia ( $\text{NH}_4^+ + \text{NH}_3$ ) spot check data vs. time, for the period 1995 – present as measured in the incoming water to the Monterey Bay Aquarium drawn from a ~50ft depth. Each of the following pages contains a 10-year period of the data, with the monthly mean  $\pm$  standard error of the spot checks being presented. Total ammonia ( $\text{NH}_4^+ + \text{NH}_3$ ) was analyzed using the method outlined with this project. Both short-term seasonal changes and longer-term events, such as El Nino, are present in the data.

For questions or to gain access to the data archive please contact either Roger Phillips ([rphillips@mbayaq.org](mailto:rphillips@mbayaq.org)) or Eric Kingsley ([ekingsley@mbayaq.org](mailto:ekingsley@mbayaq.org)) at the Monterey Bay Aquarium.

# Monterey Bay Aquarium Incoming Seawater, 1995 - 2004

## Total Ammonia ( $\text{NH}_4^+ + \text{NH}_3$ ) Spot Measurements, Mean $\pm$ Standard Error



# Monterey Bay Aquarium Incoming Seawater, 2005 - 2014

## Total Ammonia ( $\text{NH}_4^+ + \text{NH}_3$ ) Spot Measurements, Mean $\pm$ Standard Error

