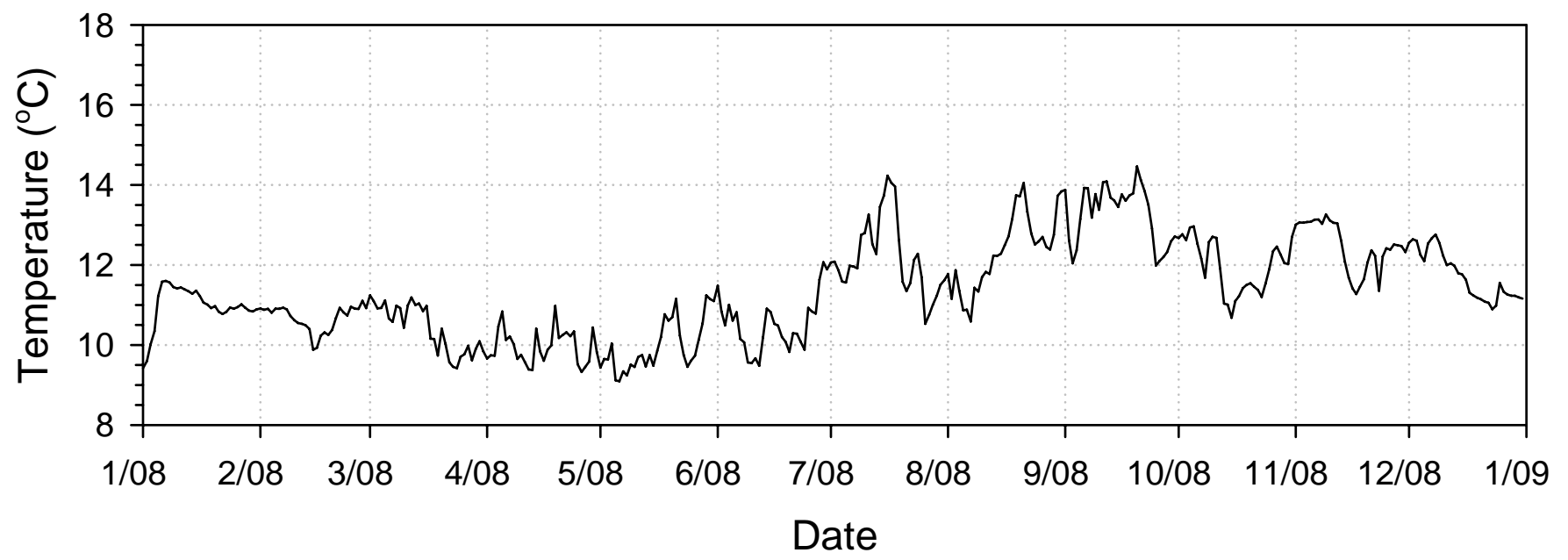
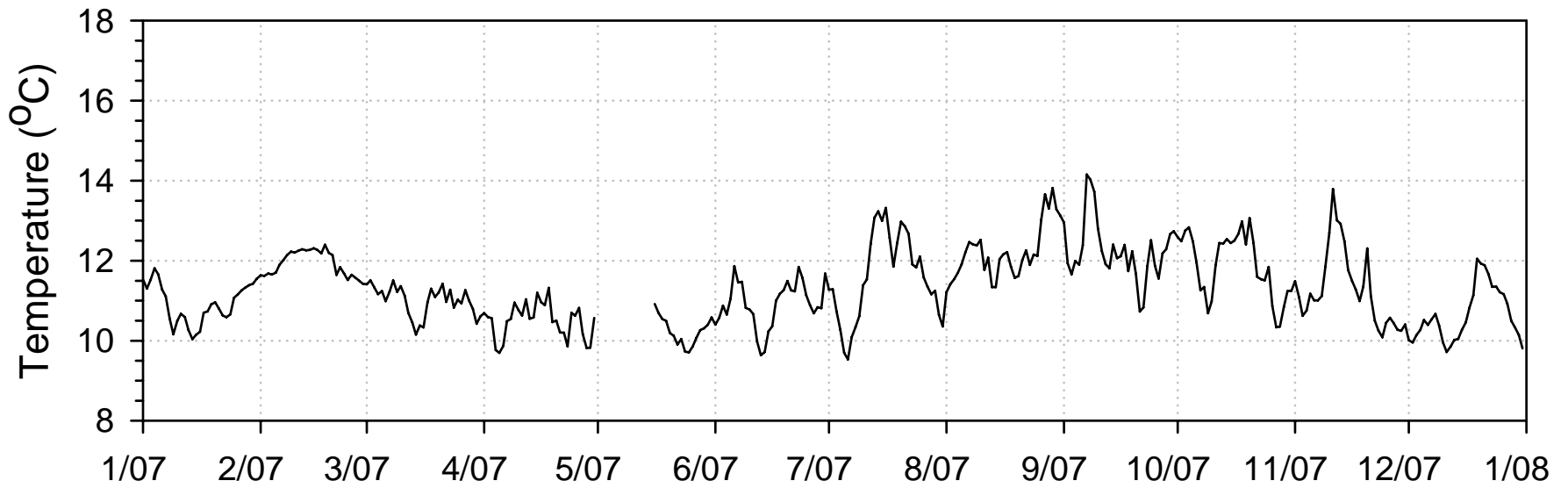


Multiple plots of the daily averaged temperature data vs. time, for the period 2007 – 2010 as measured in the incoming water to the Monterey Bay Aquarium drawn from a ~50ft depth. Each of the following pages shows a 2-year period of the data, with the temperature expressed in °C using the method outlined with this project. Both short-term seasonal changes and longer-term events, such as El Nino, are present in the data.

For questions or to gain access to the data archive please contact either Roger Phillips (rphillips@mbayaq.org) or Eric Kingsley (ekingsley@mbayaq.org) at the Monterey Bay Aquarium.

Monterey Bay Aquarium Incoming Seawater Daily Averaged In Situ Temperature (°C) 2007-2008



Monterey Bay Aquarium
Incoming Seawater Daily Averaged In Situ Temperature (°C)
2009-2010

