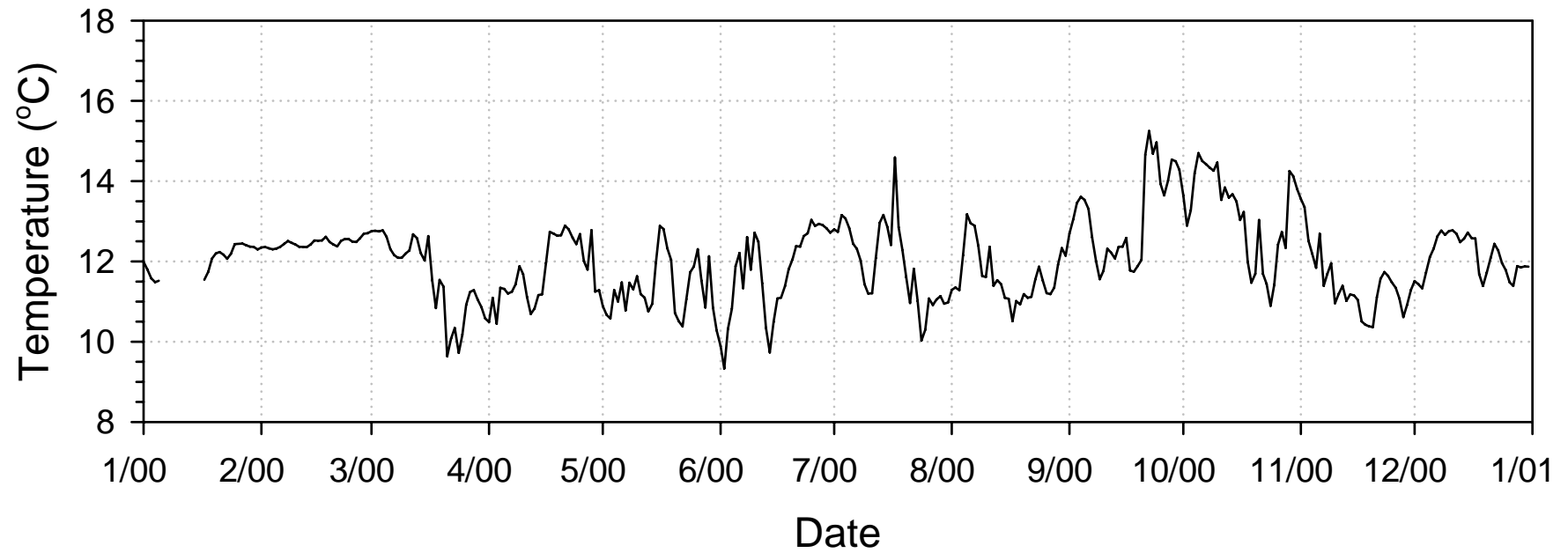
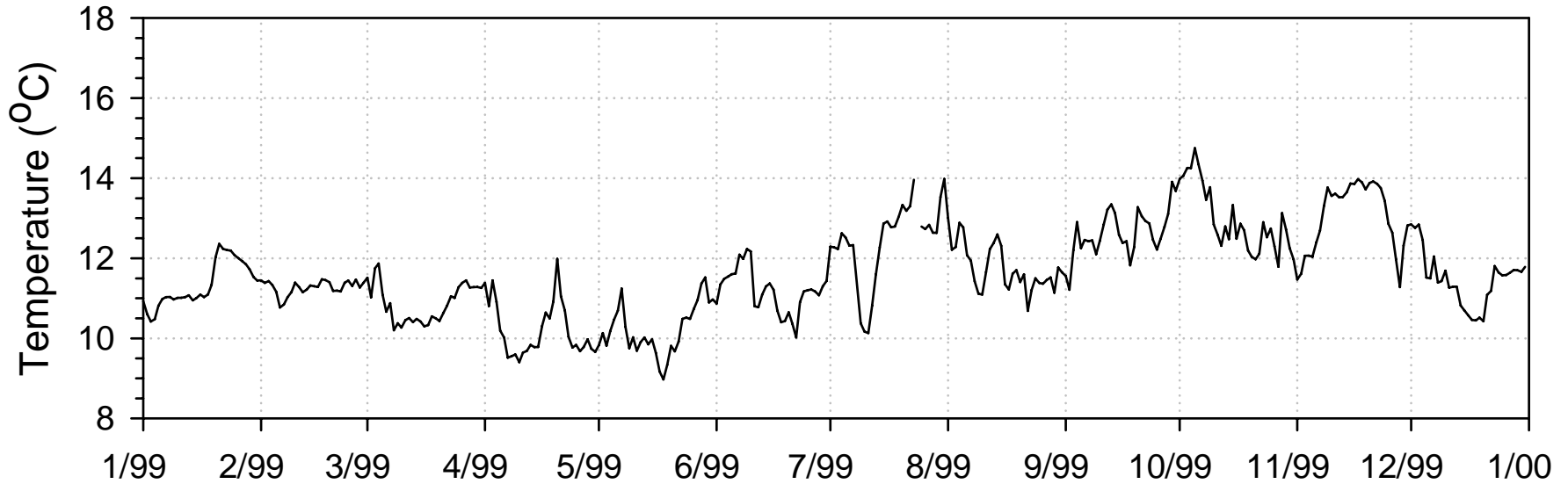


Multiple plots of the daily averaged temperature data vs. time, for the period 1999 – 2002 as measured in the incoming water to the Monterey Bay Aquarium drawn from a ~50ft depth. Each of the following pages shows a 2-year period of the data, with the temperature expressed in °C using the method outlined with this project. Both short-term seasonal changes and longer-term events, such as El Nino, are present in the data.

For questions or to gain access to the data archive please contact either Roger Phillips ([rphillips@mbayaq.org](mailto:rphillips@mbayaq.org)) or Eric Kingsley ([ekingsley@mbayaq.org](mailto:ekingsley@mbayaq.org)) at the Monterey Bay Aquarium.

# Monterey Bay Aquarium Incoming Seawater Daily Averaged In Situ Temperature (°C) 1999-2000



# Monterey Bay Aquarium Incoming Seawater Daily Averaged In Situ Temperature (°C) 2001-2002

