

Figures for DSC project page on SIMoN web site

Project Title:

NOAA's Deep-Sea Coral FY2010 Assessment for the U.S. West Coast

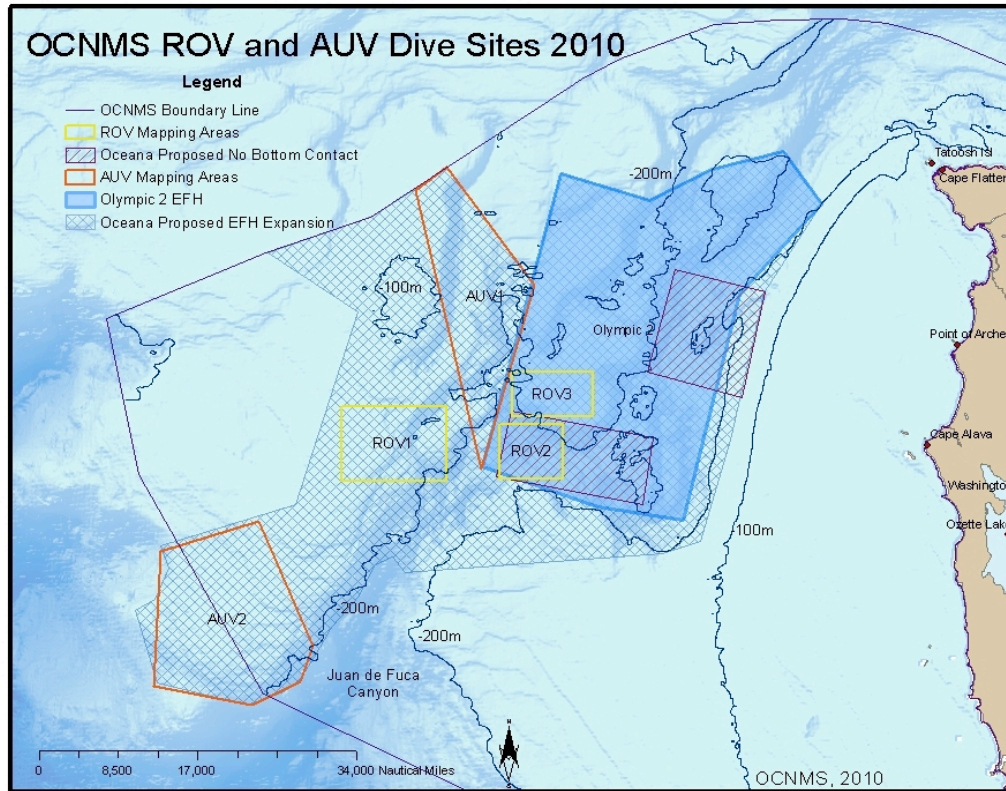


Figure 1. Targeted sites for CRUISE 1, Leg 1, ROV and AUV dives in OCNMS, off the coast of Washington state.

Cordell Bank and Gulf of the Farallones National Marine Sanctuaries ROV Dive Targets

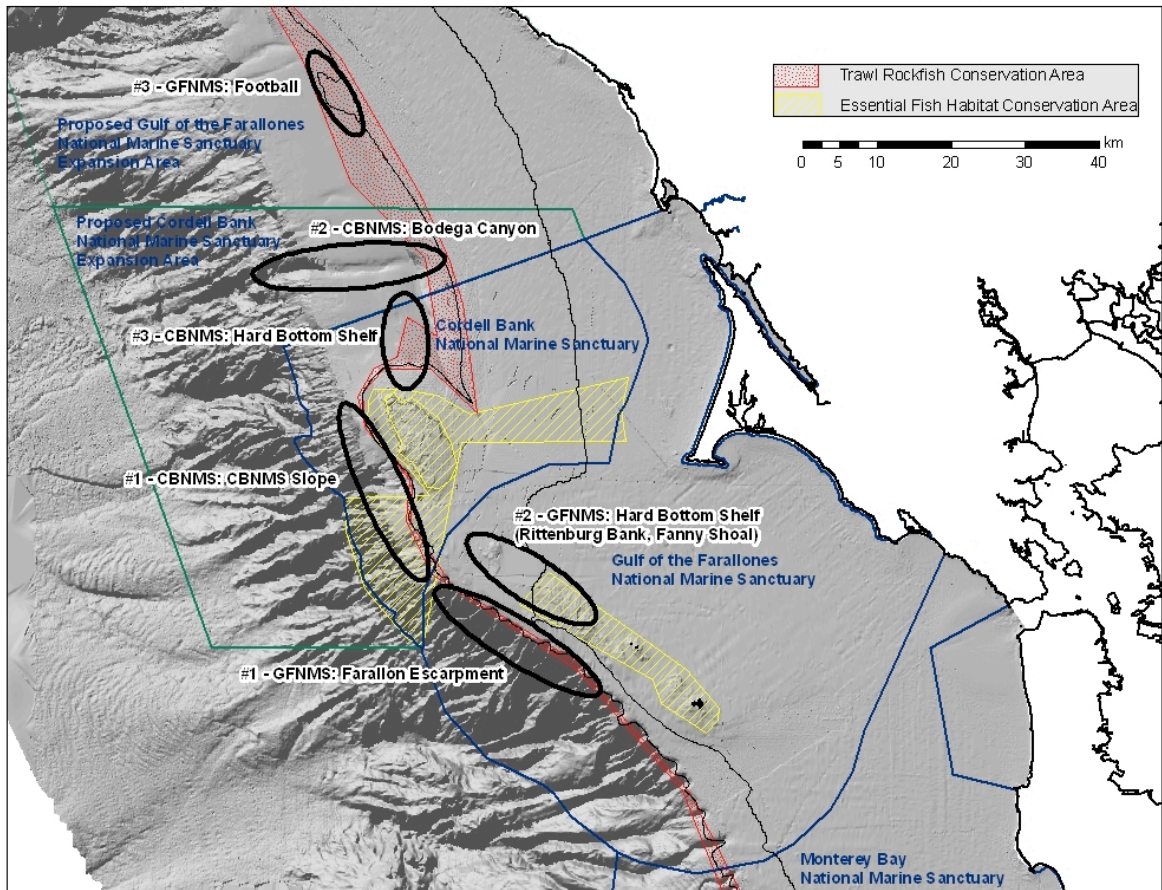


Figure 2. Targeted sites for CRUISE 1, Leg 2, ROV dives in CBNMS and GFNMS.

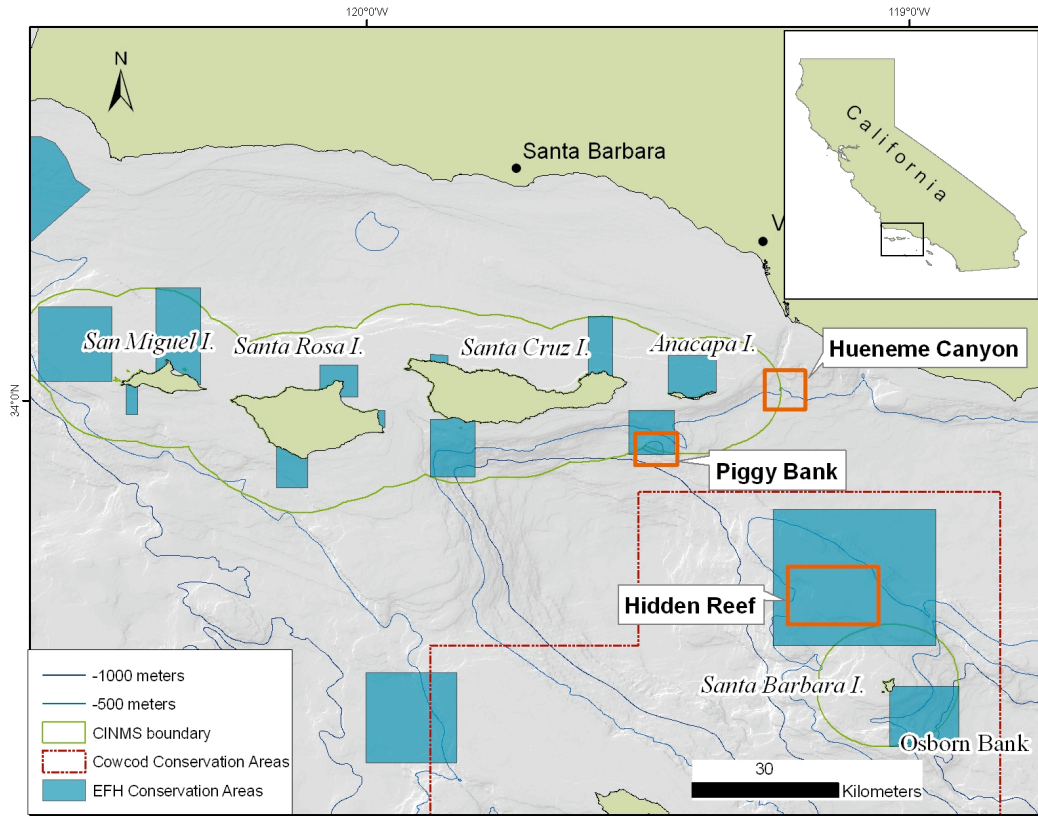


Figure 3. Overview of targeted sites for CRUISE 1 - Leg 3 (Piggy Bank), Cruise 2 (Hidden Reef), and back-up weather plan (Hueneme Canyon) in the Southern California Bight.

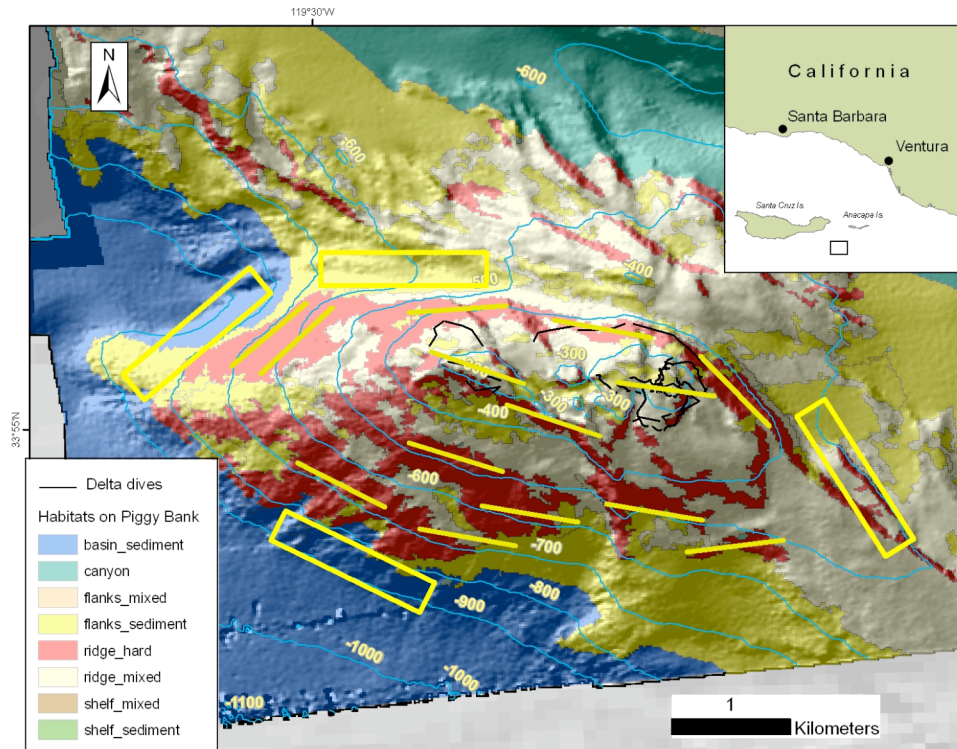


Figure 4. Details of target site for CRUISE 1, Leg 3. Interpreted seafloor habitat types overlaid on hill shaded bathymetry derived from a high-resolution multibeam acoustic survey of Piggy Bank in the Southern California Bight. Thin black track lines of previous *Delta* submersible dives are located on top of the Bank. Yellow lines indicate potential ROV and AUV surveys, primarily over rock substratum at depths from 275-850 meters. Yellow boxes indicate potential AUV surveys at depths to 850 meters.

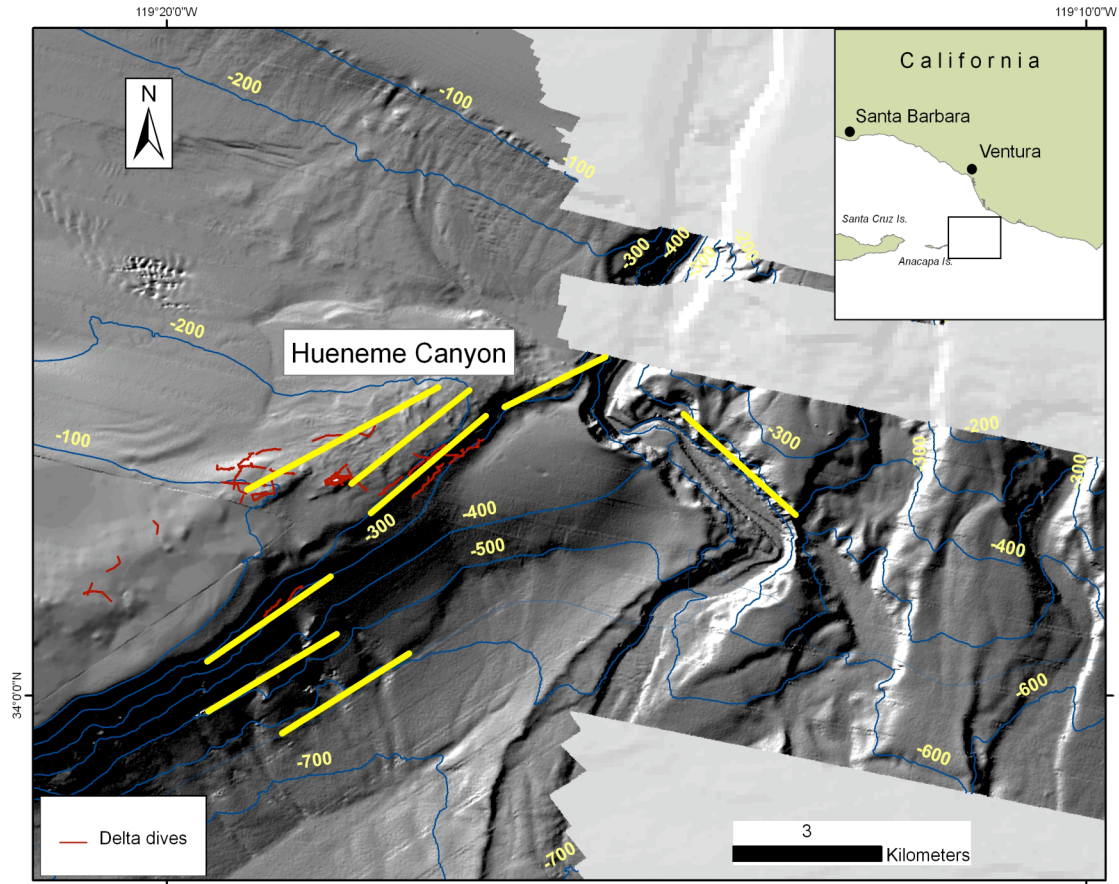


Figure 5. Foul weather, alternative study site at Hueneme Canyon for CRUISE 1, Leg 3. Map of hill-shade bathymetry derived from a high-resolution multibeam acoustic survey of Hueneme Canyon in the Southern California Bight. Thin red track lines of previous *Delta* submersible dives are located at canyon edge. Yellow lines indicate potential ROV and AUV tracks, primarily over rock substratum at depths from 100 to 600 meters.

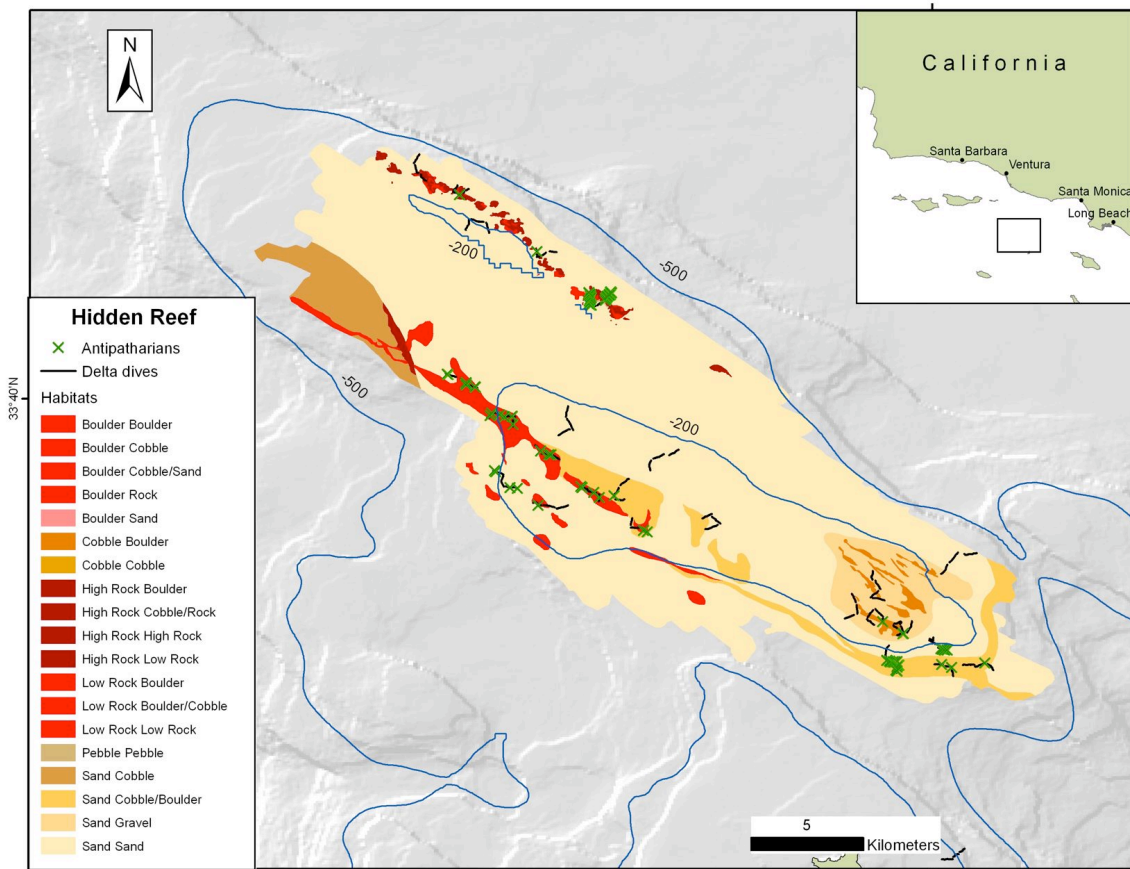


Figure 6. Targeted site for CRUISE 2. Interpreted seafloor habitat types overlaid on hill-shade bathymetry derived from a high-resolution multibeam acoustic survey of Hidden Reef in the Southern California Bight. Thin black track lines of *Delta* submersible dives conducted in 2002 are located over the reef. Green x's are locations of Christmas tree corals (*Antipathes dendrochristos*).

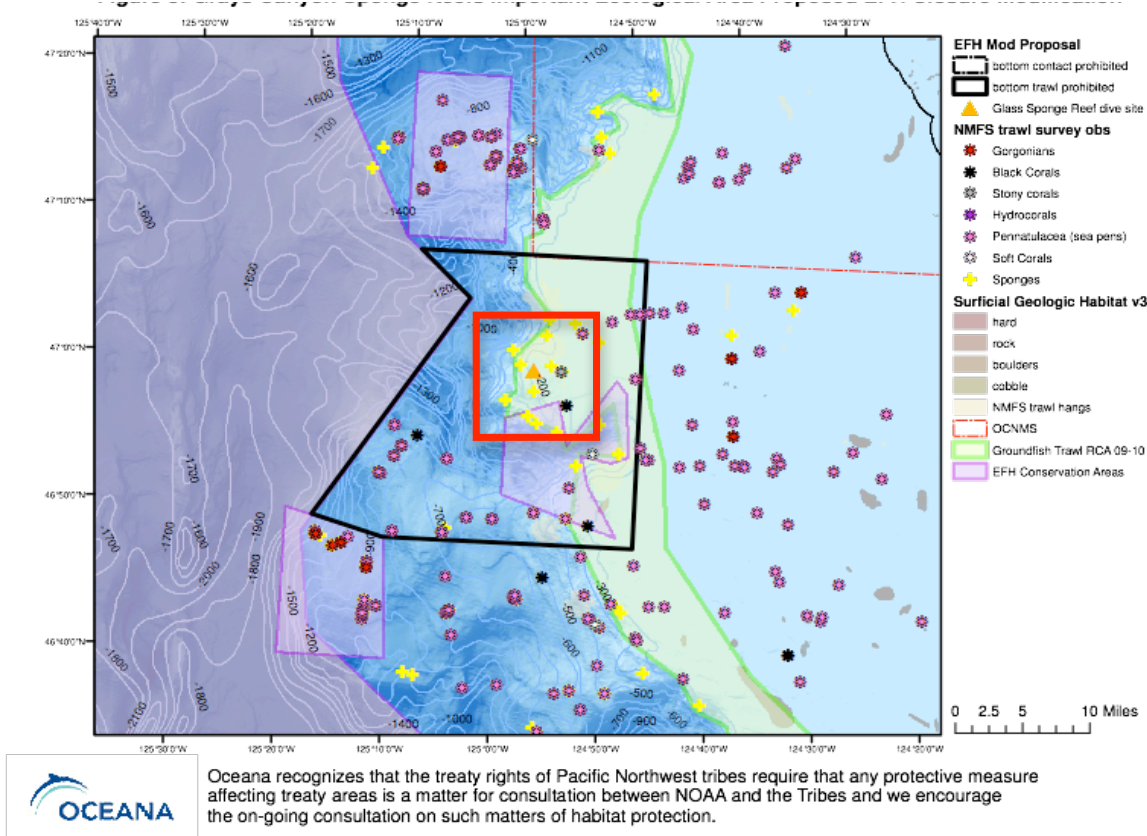


Figure 7. Targeted sites for CRUISE 3. Oceana proposed closure areas showing site of sponge reef and proposed primary study site (solid red box).