

Rhinoceros Auklet
Figures



Figure 1. Summer (orange), winter (blue) and year-round (green) distribution of Rhinoceros Auklets off North America (from http://identify.whatbird.com/obj/262/_Rhinoceros_Auklet.aspx)



Figure 2. Location of the three main breeding colonies of the Rhinoceros Auklet in California (from <http://www.prbo.org/cms/images/marine/anobath.jpg>).

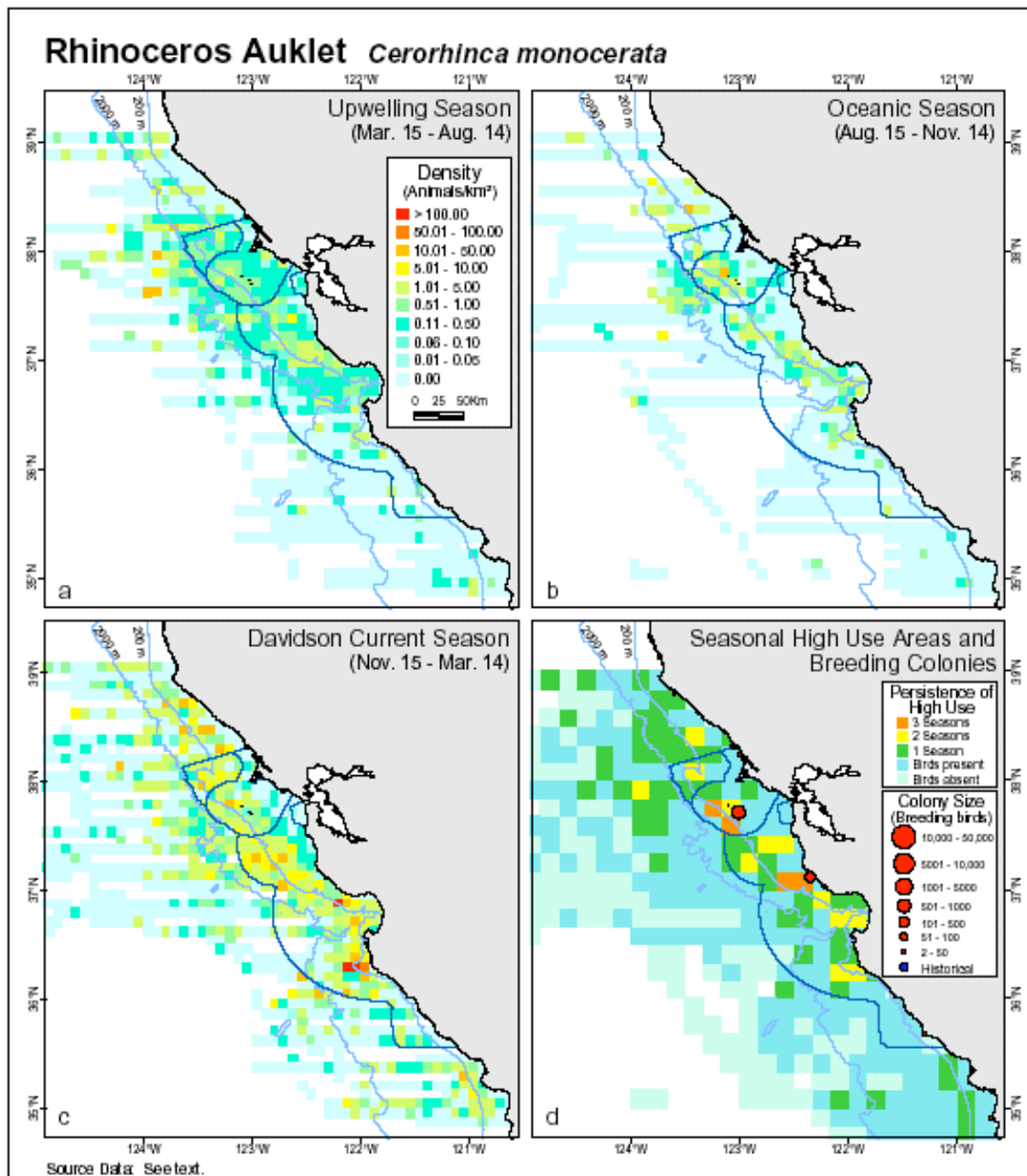


Figure 3. Density (birds/km²) of Rhinoceros Auklet in the Monterey Bay, Gulf of the Farallones, and Cordell Bank National Marine Sanctuaries during (a) Upwelling season, (b) Oceanic season, (c) Davidson Current season, and (d) all seasons combined. Location and size of breeding colonies is also shown (from NCCOS 2003).

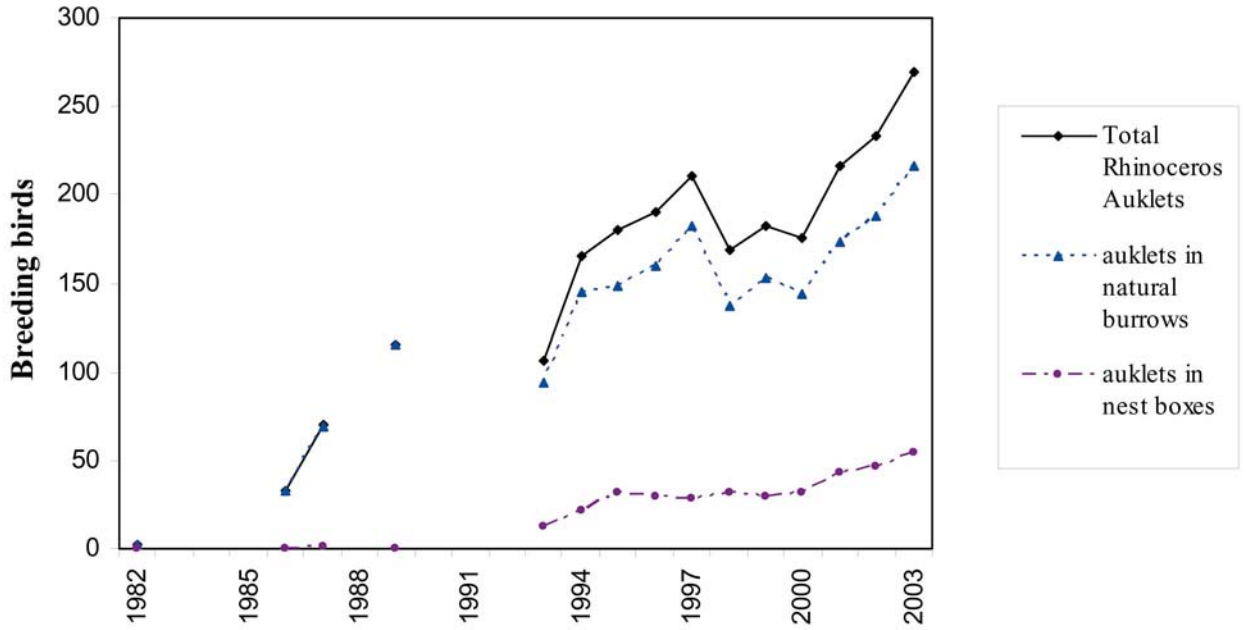


Figure 4. Population dynamics of Rhinoceros Auklets on Año Nuevo Island over 21 years, 1982-2003 (reprinted with permission from Thayer and Sydeman 2004).

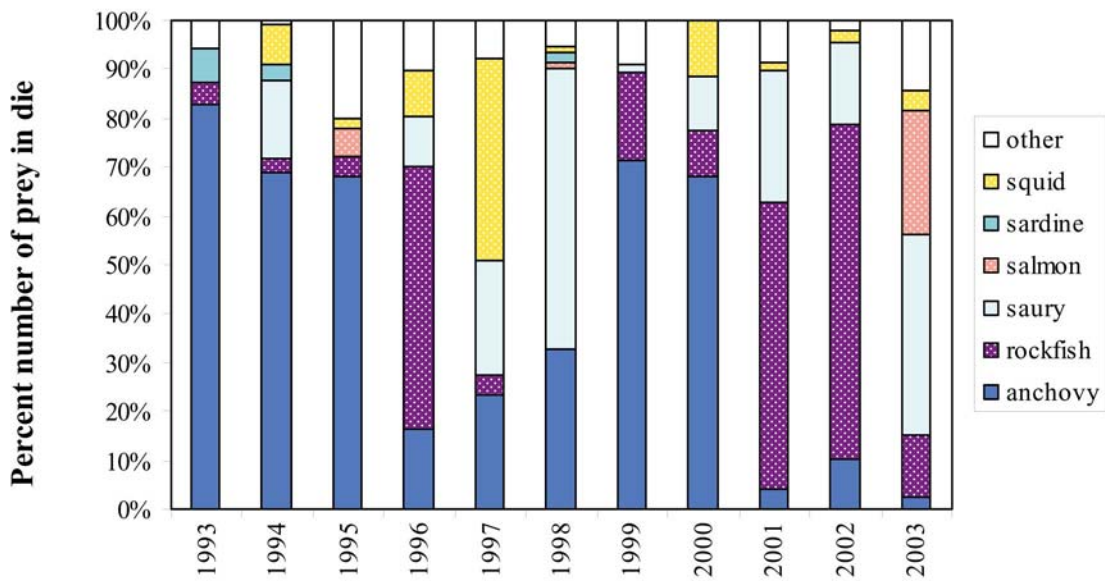


Figure 5. Percent number of prey species in Rhinoceros Auklet chick diet on Año Nuevo Island over 11 years, 1993-2003 (reprinted with permission from Thayer and Sydeman 2004).